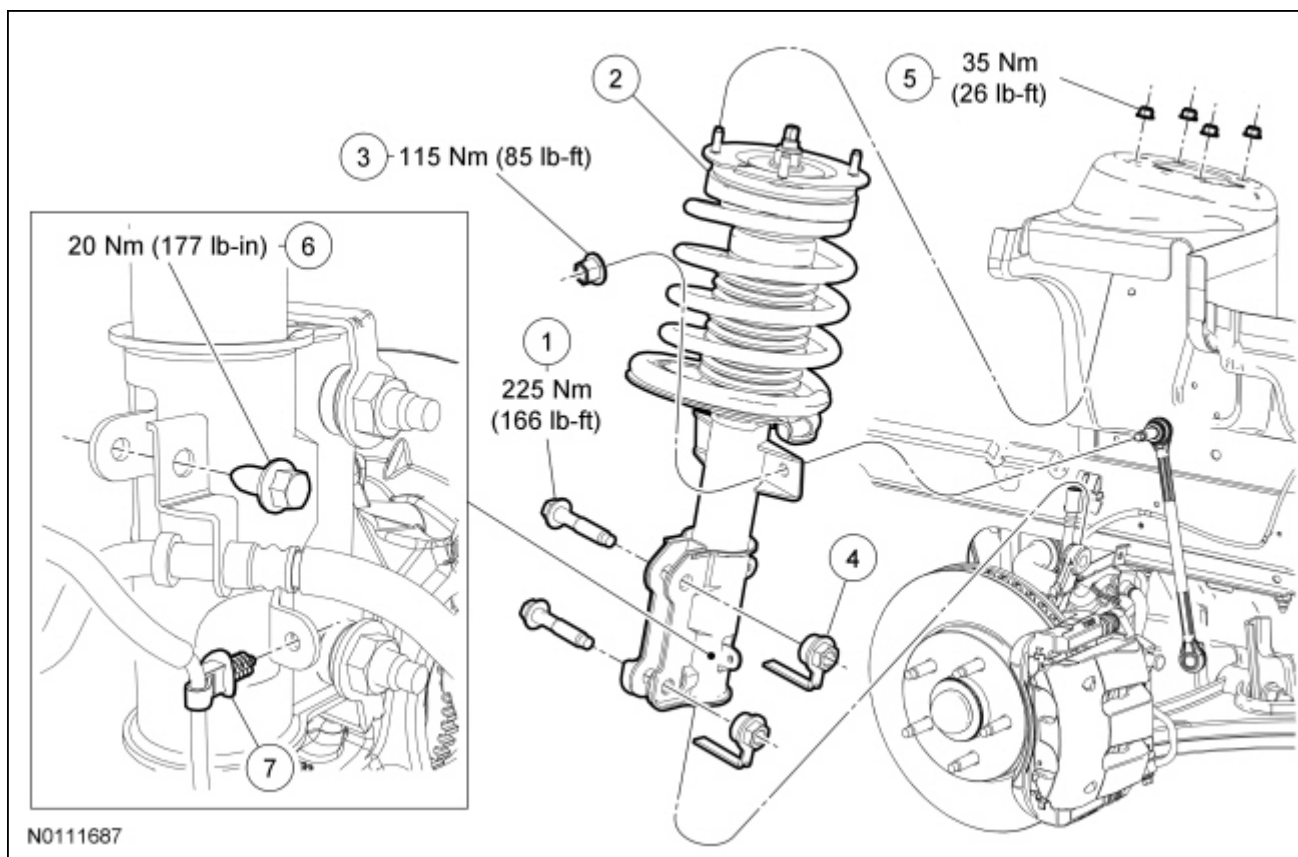


Strut and Spring Assembly



N0111687

Item	Part Number	Description
1	W714652	Strut-to-wheel spindle bolt (2 required)
2	—	Strut and spring assembly
3	W712503	Stabilizer bar link upper nut
4	W714653	Strut-to-wheel spindle flagnut (2 required)
5	W520112	Strut upper mount nut (4 required)
6	N802191	Brake hose bracket bolt
7	—	Wheel speed sensor harness retainer (part of 2C204)

Removal and Installation

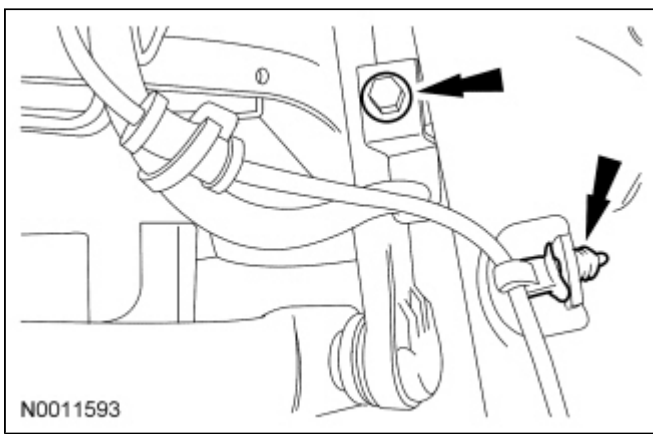
WARNING: Do not apply heat or flame to the shock absorber or strut tube. The shock absorber and strut tube are gas pressurized and could explode if heated. Failure to follow this instruction may result in serious personal injury.

WARNING: Keep all body parts clear of shock absorbers or strut rods. Shock absorbers or struts can extend unassisted. Failure to follow this instruction may result in serious personal injury.

NOTICE: Suspension fasteners are critical parts because they affect performance of vital components and systems and their failure may result in major service expense. New parts must be installed with the same

part number or equivalent part, if replacement is necessary. Do not use a replacement part of lesser quality or substitute design. Torque values must be used as specified during reassembly to make sure of correct retention of these parts.

1. Remove and discard the 4 strut upper mount nuts.
 - To install, tighten the new nuts to 35 Nm (26 lb-ft).
2. Remove the wheel and tire. For additional information, refer to [Section 204-04](#).
3. Remove the wheel speed sensor bolt and position the sensor aside.
 - To install, tighten to 15 Nm (133 lb-in).
4. Remove the brake hose bracket bolt and disconnect the wheel speed sensor wire from the bracket.
 - To install, tighten to 20 Nm (177 lb-in).

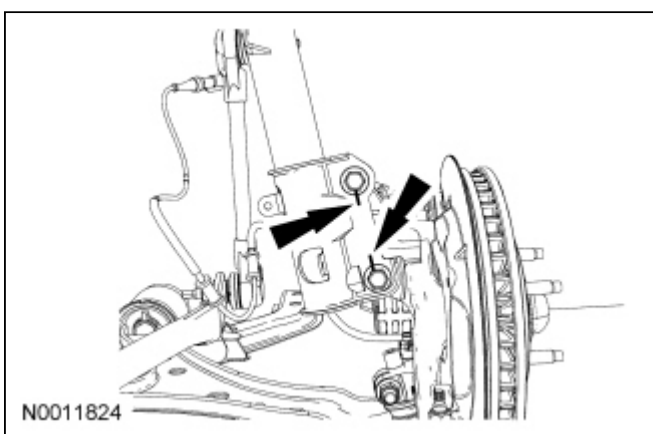



5. **NOTICE:** Use the hex-holding feature to prevent the studs from turning while removing or installing the stabilizer bar link nuts. The boot seal must not be allowed to twist at all while tightening the nuts or damage to the boot seal may occur.

Remove and discard the stabilizer bar link upper nut and disconnect the link from the strut.

- To install, tighten the new nut to 115 Nm (85 lb-ft).

6. Using a suitable jackstand, support the lower control arm.
7. If equipped, index-mark the 2 strut-to-spindle cam bolts.



8.  **WARNING:** Do not apply heat or flame to the shock absorber or strut tube. The shock absorber and strut tube are gas pressurized and could explode if heated. Failure to follow this instruction may

result in serious personal injury.



WARNING: Keep all body parts clear of shock absorbers or strut rods. Shock absorbers or struts can extend unassisted. Failure to follow this instruction may result in serious personal injury.

NOTE: If equipped, **do not** discard the strut-to-spindle cam nuts and bolts.

Remove and discard the strut-to-spindle bolts and flagnuts.

- To install, tighten to 225 Nm (166 lb-ft).

9. **NOTICE:** Damage to the lower control arm bushings may occur if the lower control arm is not supported.

Carefully lower the lower control arm and remove the strut and spring assembly.

- To install, the notch and the arrow etched into the upper bearing assembly must face the outboard side of the vehicle.

10. If necessary, disassemble the strut and spring assembly. For additional information, refer to [Strut and Spring Assembly](#) in this section.
11. To install, reverse the removal procedure.
12. Check and, if necessary, adjust the front end alignment. For additional information, refer to [Section 204-00](#).
-